



# GMT MONTHLY MEMBERSHIP PROGRESS REPORT

Results as of: 10/31/2019

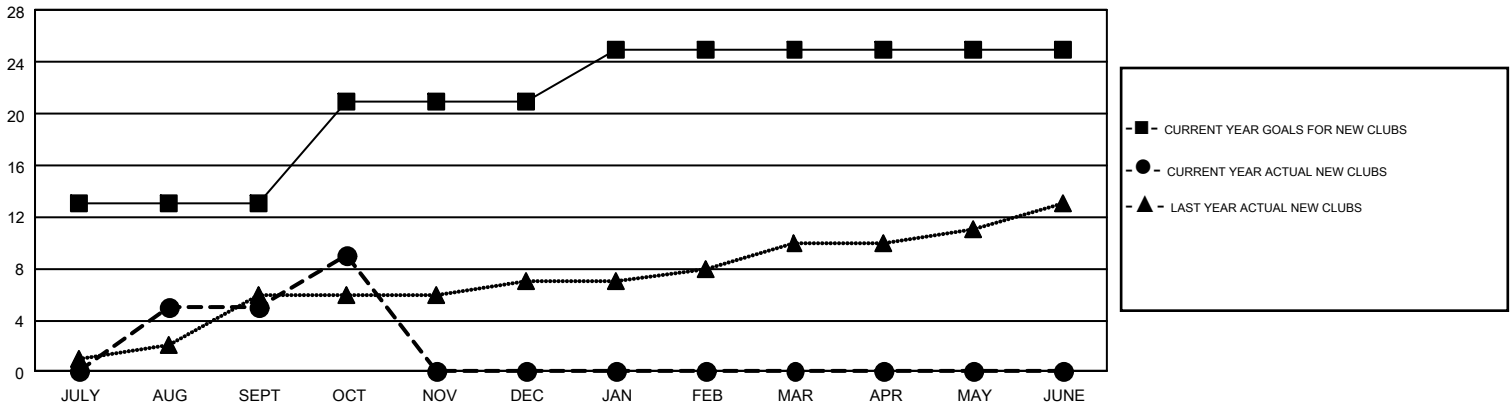
## GMT Constitutional Area 5 - K, Group L

GMT: OPEN

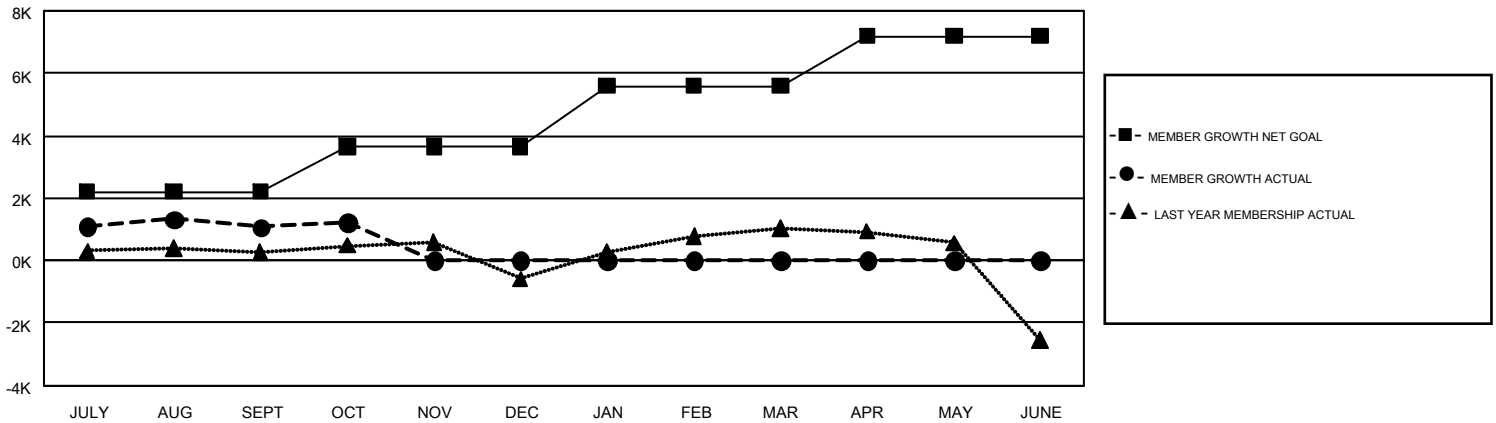
REPORT DOES NOT INCLUDE CLUBS IN UNDISTRICTED AREAS.

Clubs				Members			
RESULTS FOR 2019-2020				RESULTS FOR 2019-2020			
QUARTER	NEW CLUB GOAL	NEW CLUBS	DROPPED CLUBS	QUARTER	MEMBER GROWTH NET GOAL	MEMBER GROWTH ACTUAL	DROPPED MEMBERS ACTUAL (including transfers)
JULY/AUG/SEPT	13	5	3	JULY/AUG/SEPT	2210	2,781	1,620
OCT/NOV/DEC	8	4	0	OCT/NOV/DEC	1450	572	418
JAN/FEB/MAR	4	0	0	JAN/FEB/MAR	1940	0	0
APR/MAY/JUNE	0	0	0	APR/MAY/JUNE	1590	0	0

GOALS AND ACTUAL NEW CLUBS CUMULATIVE



GOALS AND ACTUAL MEMBERS CUMULATIVE



DROPPED CLUBS: 3	685 CLUBS OF 1,061 ADDED 1 OR MORE NEW MEMBERS	<b>GENDER DISTRIBUTION</b> MALE                    35,888 (71.74%) FEMALE                 14,139 (28.26%)
<b>DROPPED MEMBERS</b> DECEASED                    18 CLUB CANCELLED                0 OTHER                            2,020 <hr/> TOTAL                            2,038	<a href="#">CLICK HERE FOR CUMULATIVE MEMBERSHIP DATA</a>	TOTAL FAMILY UNIT MEMBERS                    5,841  FAMILY MEMBERS PAYING HALF DUES                    3,520